



All-in-one Android Touch POS Machine

- All-in-one POS terminal with built-in 80mm thermal printer put together.
- ARM based processor, and powerful android 6.0.1 system is compact with stylish design.
- A perfect combination of 13.3" IPS LCD and multi-point projective capacitive touch screen.
- Built-in 2200mAh lithium battery is optional, totally keeps the POS system running and prevents data loss during a power outage.
- Choice of color available on request.

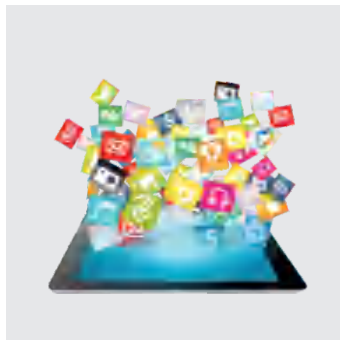


JAW-A133D

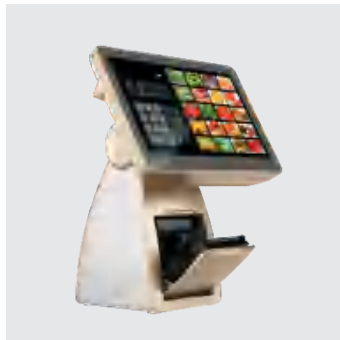




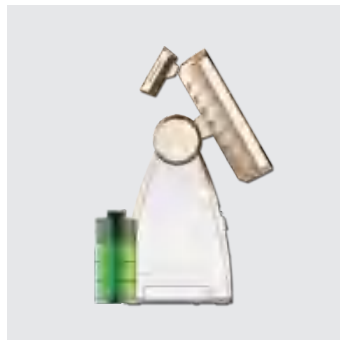
Concise and elegant with dynamic colors



With Android 6.0.1 OS, friendly interface, operate effortlessly, stable and practical



Integrated 80mm thermal printer with auto cutter



Built-in 2200mAh battery, totally prevent data loss when there runs into a outage.

Specifications

Item		Specifications
CPU	ARM	ARM Cortex A53 Octa-core
OS	Supporting System	Android 6.0.1 version
Appearance	Color	Moonlight Silver / Champagne Gold
Main	Memory	DDR3 2GB
	Hard Disk	8GB flash
	Compact Flash	TF card (support up to 32GB MicroSD)
Primary Display	LCD	13.3" full flat LCD display
	Resolution	1920 * 1080 Pixel
	Touch Panel	Multi-point projective capacitive touch panel
I/O Interfaces	Serial	2 * RS232
	USB	3 * USB
	LAN	1 * RJ45 (10/100M)
	Cash Drawer	1 * RJ45
	Audio	1 * Mic-in, 1 * Line-Out with built-in speaker
Built-in peripherals	Printer	80mm thermal printer (support 85mm paper width) 160mm/sec printing speed
	Customer Display	Chinese and English LED customer display (support graphics display)
Other functions	Wifi	Support 802.11 a/b/g/n wireless protocol
	Bluetooth	Support Bluetooth 4.0 protocol
	Wall-mounted	Standard VESA mounting holes
Power	DC-IN	Input AC 100~240V / 50~60hz, Output DC 24V
Size	Dimension	332mm * 172mm * 198mm
Optional	Battery	Built-in 2200ma lithium battery
Environment	Operating	0°C~40°C at 20%~80% humidity
	Storage	-20°C~60°C at 20%~85% humidity
Product Reliability	Certifications	CE, FCC, RoHS