

# ATHENA

Waterproof Stainless Steel Kitchen Display System



## FEATURES

### Commercial Grade PCAP Touch Screen

The PCAP capacitive touchscreen offers ample display space for full customization of layouts and functions. Reduce unnecessary touches, cut ticket times, and keep your kitchen running smoothly.

### Power Over Ethernet (POE+)

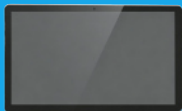
Power over Ethernet (PoE) eliminates the need for dedicated power outlets, adapters, and complex cabling at every station. Fewer failure points mean easier troubleshooting, simpler maintenance, and hassle-free support.

### Unlock More Possibilities With A Vesa Mount

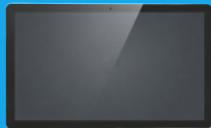
Athena can be mounted with a VESA mount, enabling more applicable scenarios. For example, it can be used as a kitchen display of a KDS, greatly improving the restaurant operational efficiency.



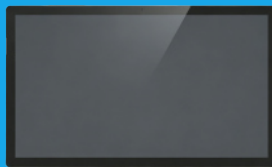
## Three Size Options, Sleek and Sturdy



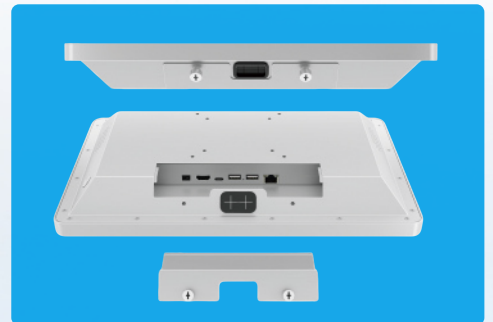
ATH156A  
15.6"



ATH215A  
21.5"



ATH240A  
24"



## Waterproof Protection

Front Panel IP65  
Rear Casing IP54



## VESA Mount

For more space-saving installation and more flexible use.



# ATHENA

Designed to handle the harsh environment of a restaurant Kitchen, the athena can dramatically improve sustainable Kitchen operations.



## SPECIFICATIONS

Model No.	ATH156A	ATH215A	ATH240A
<b>SYSTEM</b>			
CPU	RK3576S Quad core cortex A72+Quad core cortex A53		
GPU	ARM Mali G52 MC3		
NPU	3 TOPS		
Memory	4GB		
Storage	64GB		
OS	Android 14		
<b>DISPLAY</b>			
Type	15.6"	21.5"	24"
Resolution	1920*1080	1920*1080	1920*1080
Color gamut	45% NTSC	75% NTSC	74% NTSC
Viewing angle	R/L 85/85, U/D 85/85	R/L 89/89, U/D 89/89	R/L 89/89, U/D 89/89
Contrast ratio	1000:1	3000:1	1000:1
Luminance	400 nits		
Aspect ratio	16:9		
<b>INTERFACES</b>			
USB	1*USB3.0, 1*USB2.0		
LAN	1*RJ45 10/100/1000M Ethernet		
Display	1*HDMI 2.0		
Type-C	1* Type-C (Only supports OTG function)		
Power DC-IN	DC 12V/2A	DC 12V/3A	DC 12V/5A
<b>PHYSICAL &amp; ENVIRONMENTAL</b>			
Operating Temperature	Operating 0~40° at 20% to 80% Humidity		
Storage Temperature	Storage -20~-60° at 10% to 95% Humidity		
Dimensions	(W×H×D) 343.56x228x47.2 MM	(W×H×D) 513.56x305.58x55.3 MM	(W×H×D) 568.4x337.86x54.6 MM
Packing Dimensions	(W×H×D) 437x127x309 MM	(W×H×D) 606x381x139MM	(W×H×D) 665x415x141MM
Net Weight	2.92KG	5.86KG	7.1KG
Material	Stainless steel/Sheet metal		
Color	Matte Black/Silve		
<b>PERIPHERALS</b>			
Wifi	IEEE 802.11a/b/g/n/ac/ax (Wi-Fi 6)		
Bluetooth	Bluetooth 5.4		
Speaker	2*3W Speaker	2*3W Speaker	2*5W Speaker
Camera	8.0MP		
POE	IEEE STD 802.3BT		
Waterproof rating	Front IP65, Back IP54		
Mounting Options	VESA 75*75MM /100*100MM Bracket		